

# Designated Uses

- According to IN Water Pollution Control Board (327 IAC 2-1.5-5) the following uses apply to State surface waters:
  - Full Body Contact Recreation
  - Well-Balanced Warm-Water Aquatic Community
  - Agricultural Use Supply
  - Industrial Water Supply
  - Public Water Supply
- Galena R. and Tributaries in LaPorte Co.
  - Salmonid Waters – Protected for cold water fish



# Issue

- Elevated levels of *E. coli* bacteria in Galena River watershed.
- Impaired Use – Full Body Contact Recreation
- Violation of State Water Quality Standard; listing on State's 303(d) list since 2002.
- Increased risk to human health.

# Total Maximum Daily Load

- The maximum amount of a pollutant that a waterbody can receive and still meet water quality standards.

$TMDL = \sum WLA + \sum LA + MOS$  , where:

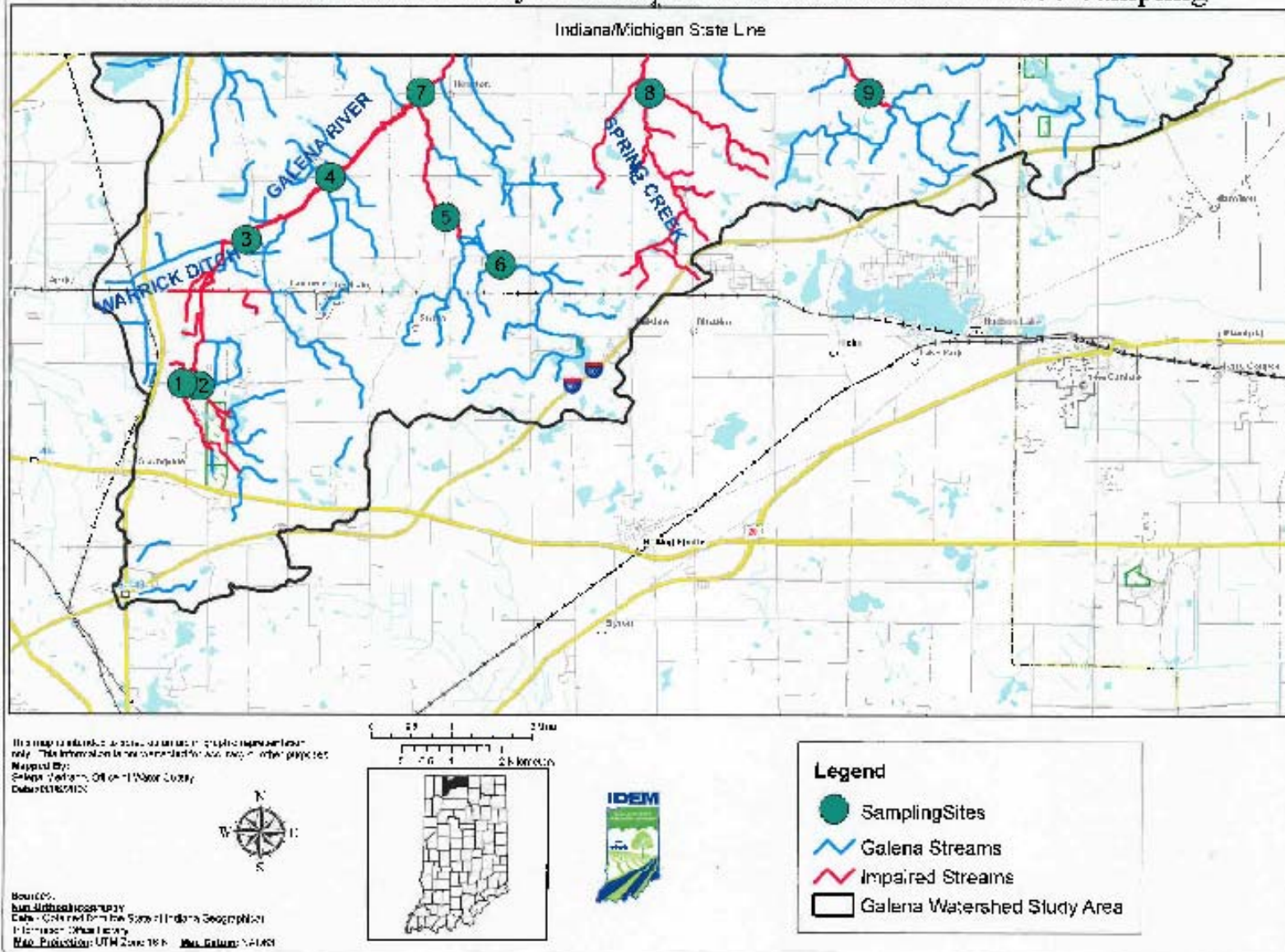
WLA = Waste Load Allocations (point sources)

LA = Load Allocations (non-point sources)

MOS = Margin of Safety

Figure 3

### Galena River Watershed Study Area Impaired Streams Based on 2008 Sampling



# Load Reductions Needed

Site #	LSite	Stream Name	Geometric mean	Percent Reduction Needed
1	LMG100-0010	Galena River	613	79.61%
2	LMG100-0008	Galena River East	144	13.19%
3	LMG100-0012	Galena River	379	67.02%
4	LMG100-0013	Galena River	288	56.60%
5	LMG100-0014	Unnamed Tributary East to Galena River	287	56.45%
6	LMG100-0011	Main Tributary East to Galena River	116	N/A
7	LMG100-0015	Galena River	297	57.91%
8	LMG100-0017	Spring Creek	383	67.36%
9	LMG100-0009	Unnamed Tributary to Spring Creek	424	70.52%

# Recommended Future Activities

- Riparian Area Management
- Manure Collection and Storage
- Contour Row Crops
- No-Till Farming
- Manure Nutrient Testing
- Drift Fences
- Pet-Clean Up/Education
- Septic Management/Public Education